



GAT MONTHLY MEMBERSHIP PROGRESS REPORT

Results as of: 9/30/2022

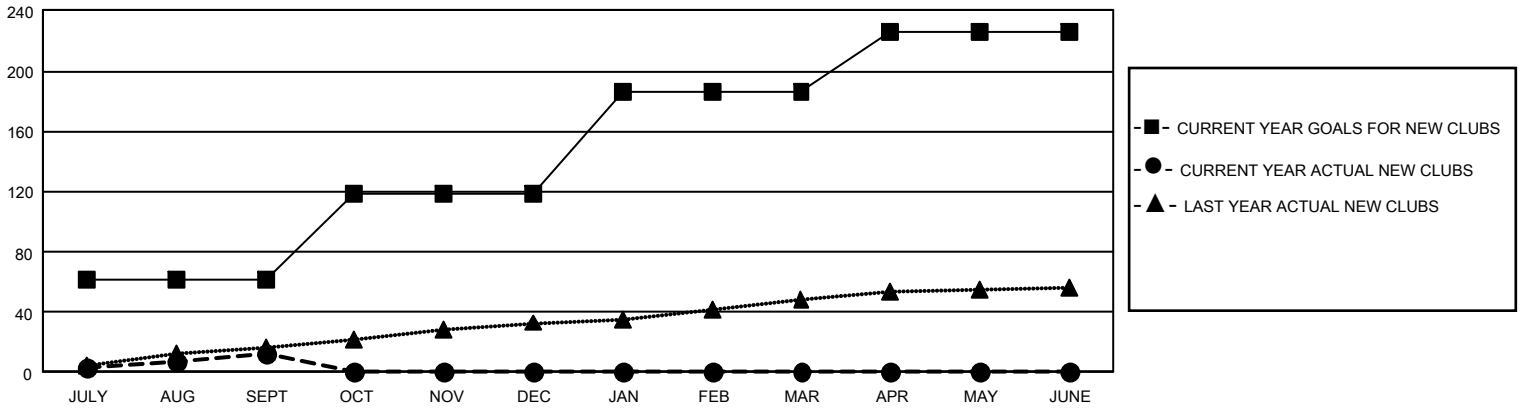
GAT Constitutional Area 5 - Korea

REPORT DOES NOT INCLUDE CLUBS IN UNDISTRICTED AREAS.

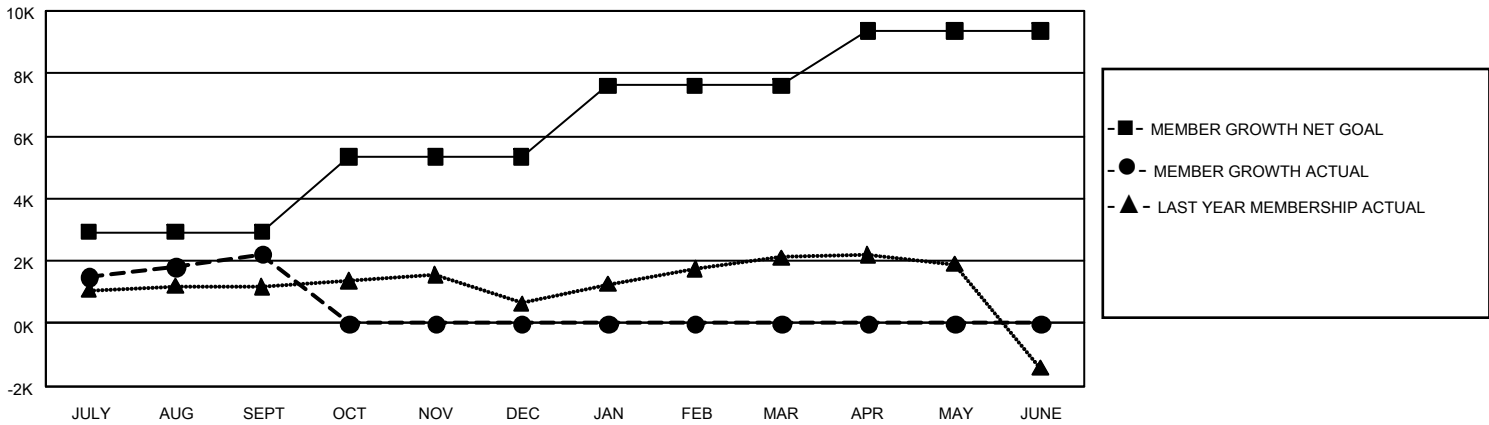
Clubs			
RESULTS FOR 2022-2023			
QUARTER	NEW CLUB GOAL	NEW CLUBS	DROPPED CLUBS
JULY/AUG/SEPT	183	12	12
OCT/NOV/DEC	174	0	0
JAN/FEB/MAR	201	0	0
APR/MAY/JUNE	120	0	0

Members			
RESULTS FOR 2022-2023			
QUARTER	MEMBER GROWTH NET GOAL	MEMBER GROWTH ACTUAL	DROPPED MEMBERS ACTUAL (including transfers)
JULY/AUG/SEPT	2925	4,708	2,305
OCT/NOV/DEC	2400	0	0
JAN/FEB/MAR	2293	0	0
APR/MAY/JUNE	1738	0	0

GOALS AND ACTUAL NEW CLUBS CUMULATIVE



GOALS AND ACTUAL MEMBERS CUMULATIVE



DROPPED CLUBS: 12	
DROPPED MEMBERS	
DECEASED	70
CLUB CANCELLED	17
OTHER	2,218
TOTAL	2,305

1,069 CLUBS OF 2,049 ADDED 1 OR MORE NEW MEMBERS

[CLICK HERE FOR CUMULATIVE MEMBERSHIP DATA](#)

GENDER DISTRIBUTION	
MALE	55,446 (74.70%)
FEMALE	18,783 (25.30%)
NON BINARY	0 (0.00%)
PREFER NOT TO ANSWER	0 (0.00%)
TOTAL FAMILY UNIT MEMBERS	4,819
FAMILY MEMBERS PAYING HALF DUES	2,785